

# Ionospheric climatology at South American sector using amplitude scintillation S4 index



Universidade Presbiteriana  
**Mackenzie**

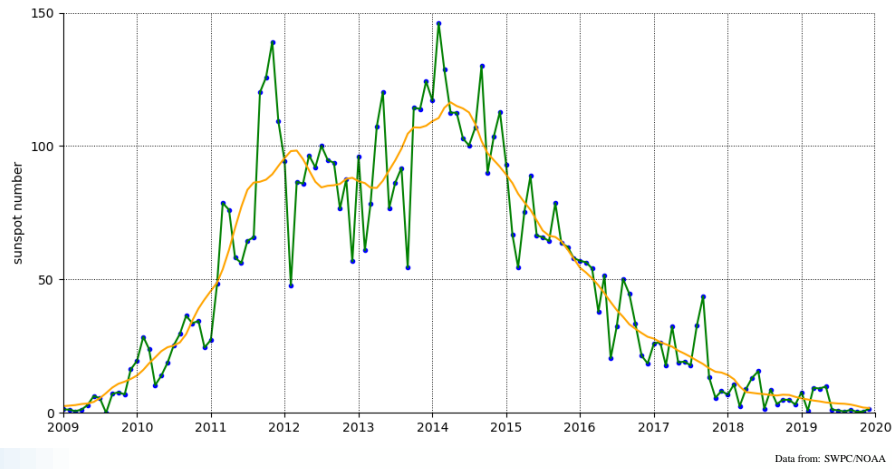


Eduardo P. Macho<sup>1</sup>, Emília Correia<sup>1,2</sup>

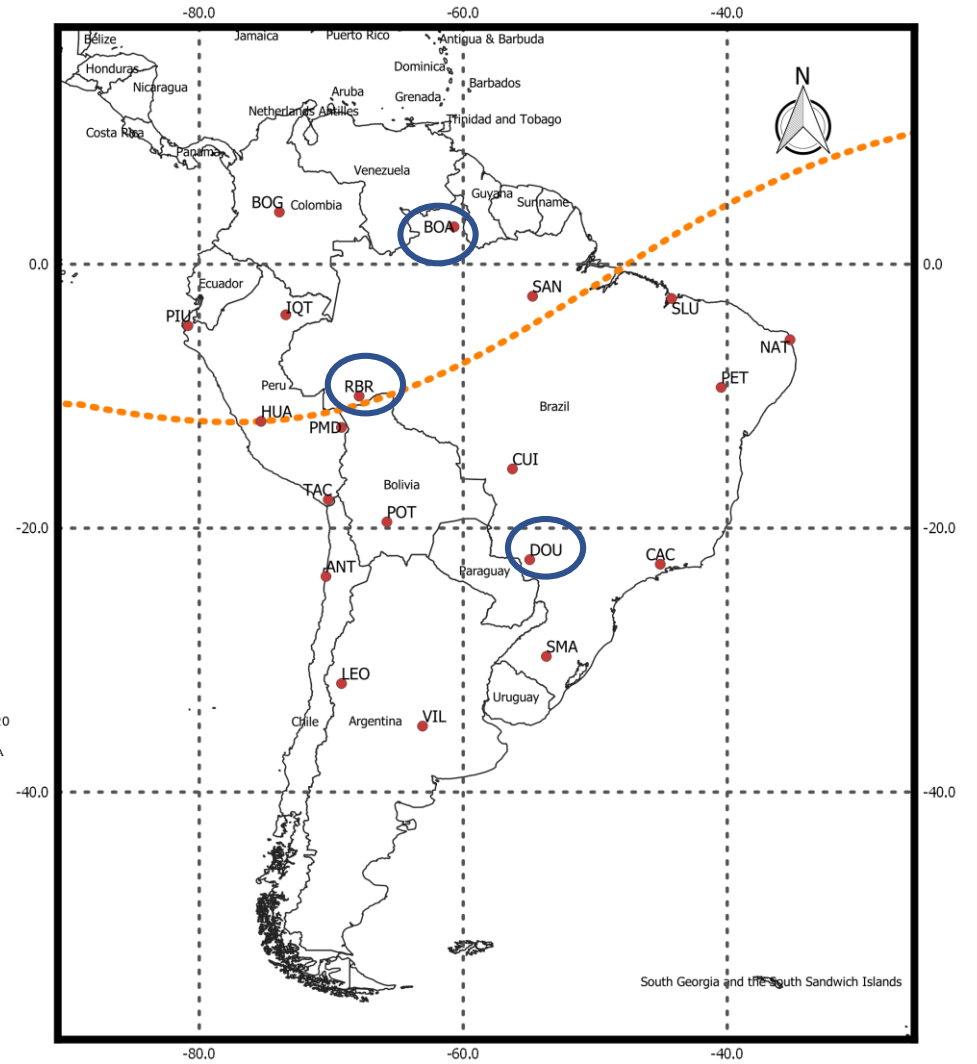
<sup>1</sup>*Centro de Rádio Astronomia e Astrofísica Mackenzie (CRAAM), São Paulo, Brasil*

<sup>2</sup>*Instituto Nacional de Pesquisas Espaciais (INPE), São José dos Campos, Brasil*

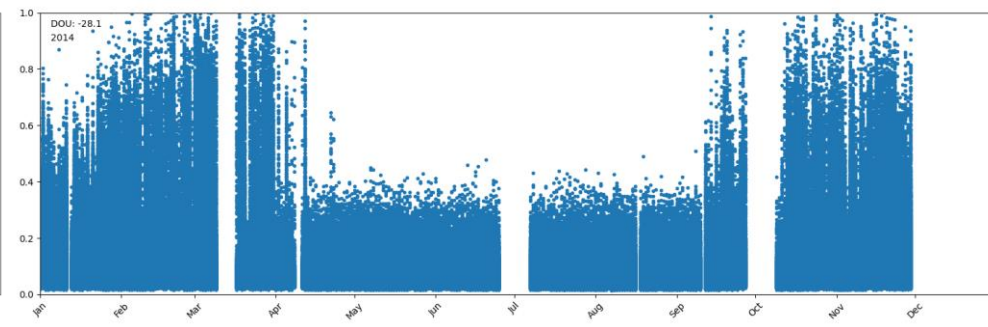
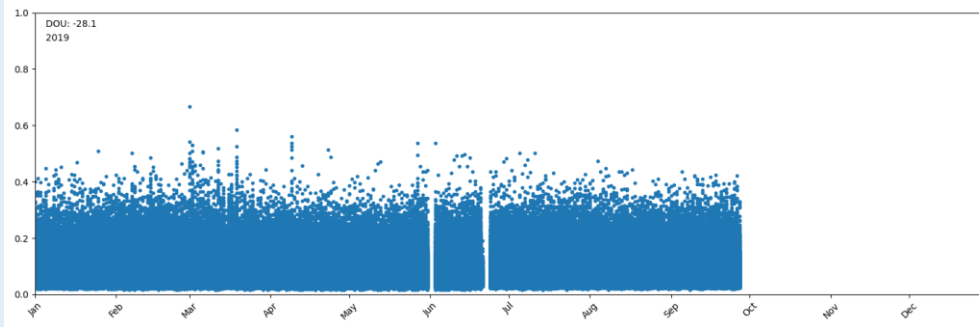
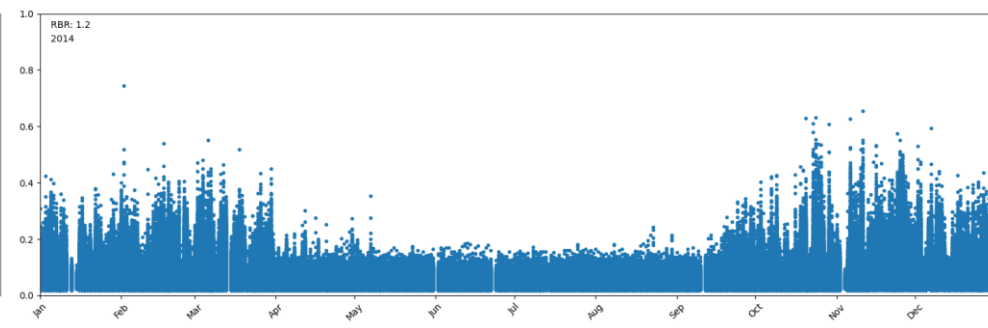
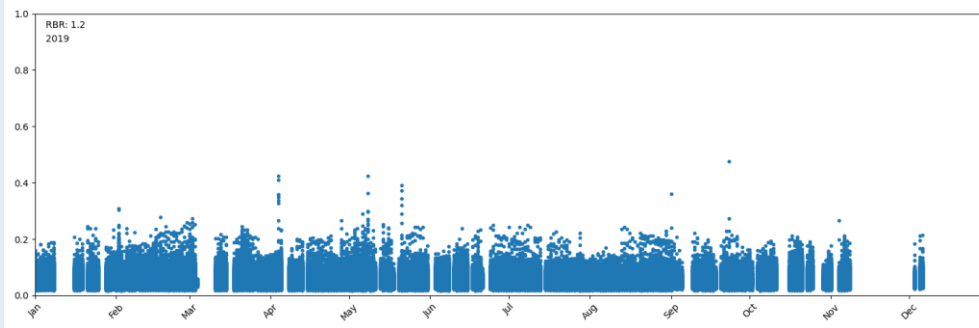
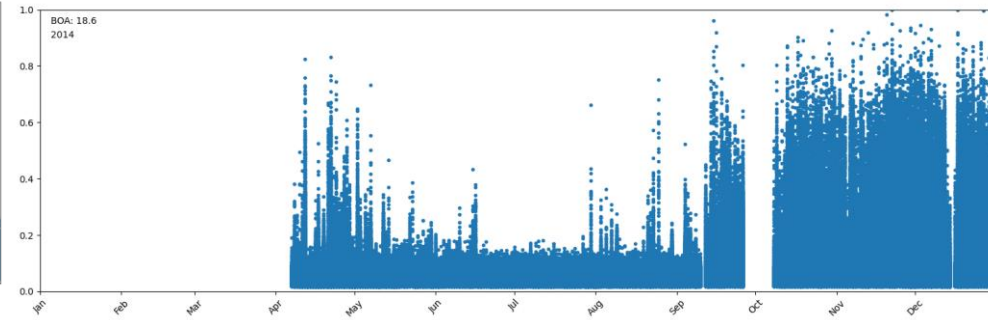
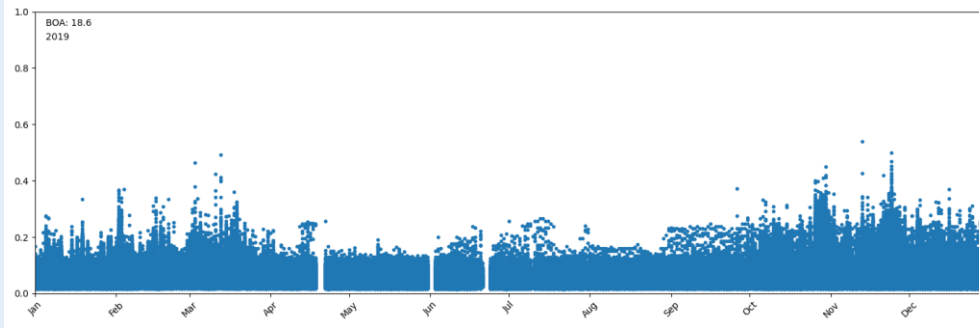
## Solar Cycle



## GNSS Stations



# S4 Index



# S4 Index over 0.2

